



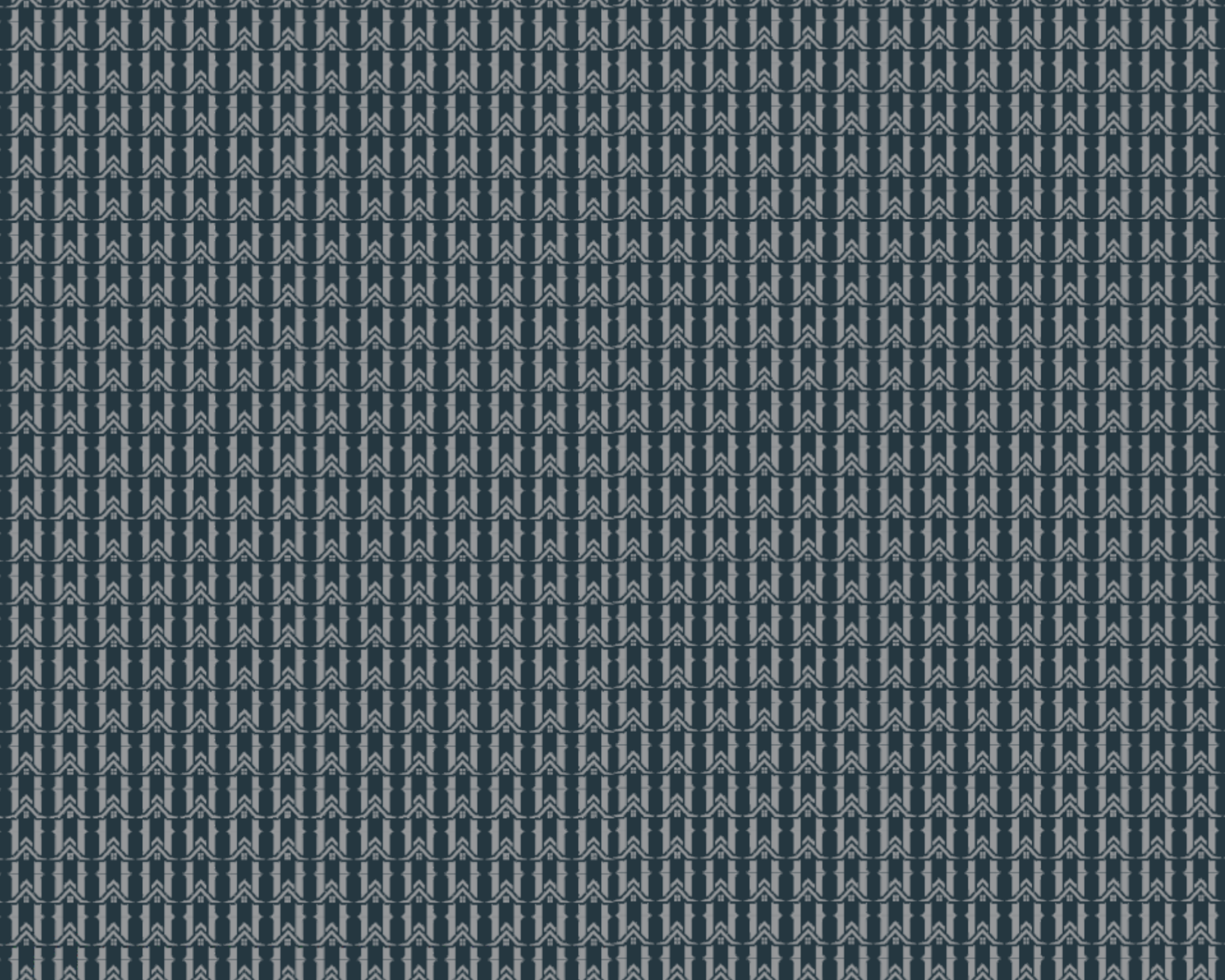
**VAASTU HOMES**  
HEALTH • WEALTH • PROSPERITY

*The*  **RESORT** *Life*

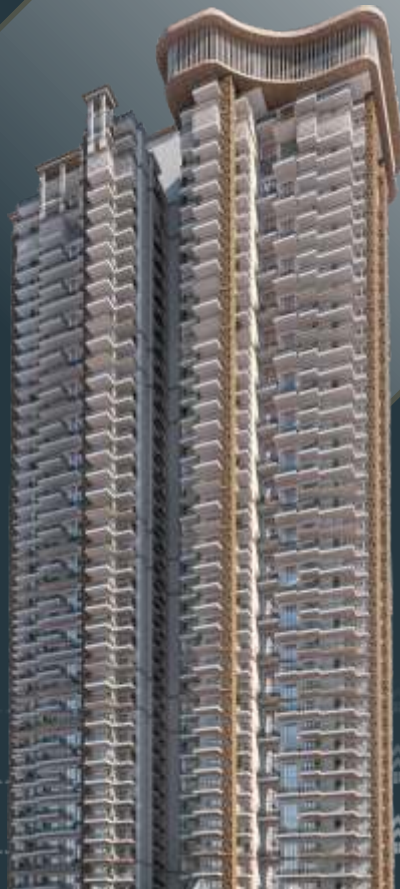


<http://up-rera.in/projects>  
UPRERAPRJ802380/10/2024  
ENVYRONS INFRASTRUCTURE -  
Collection Account for VAASTU HOMES  
Account Number : 924020013286348





LIVE LIFE  
RESORT STYLE





Where your dreams find their form and flourish.



*Your home is designed  
accordance to Vaastu Shastra*

VAASTU HOMES - A dream which our founder **Dr. NAVRANG KUMAR MITTAL** had when he commenced his career 30 years back as an Architect to create an environment with the blend of ARCHITECTURAL FINESSE & VAASTU SHASTRA to provide an ultra luxury living with abundant positive energy to embark all three elements in your life:

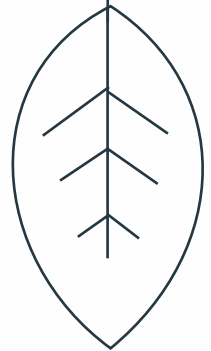
**HEALTH - WEALTH - PROSPERITY**



**VAASTU HOMES**

HEALTH • WEALTH • PROSPERITY

As our name suggests, we deeply understand the importance of VAASTU SHASTRA in one's life, so we came up with the blend of CIVIL ARCHITECT & VAASTU SHASTRA to provide you with an environment comprising Happiness, Joy & Positivity all around.





# VAASTU HOMES

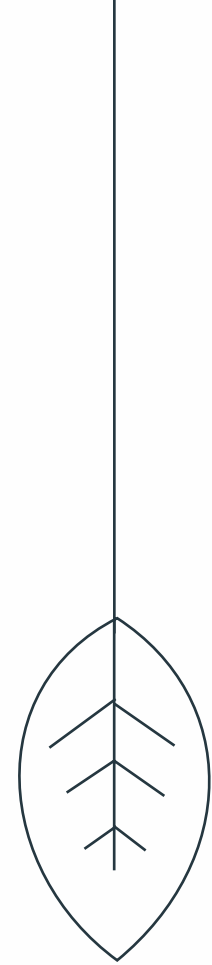
HEALTH • WEALTH • PROSPERITY

**Success finds its home at Siddharth Vihar,  
meticulously crafted to offer a lifestyle of unparalleled  
abundance, reserved for a select few true leaders.**





**Architectural Wonders  
that Redefine Living**





## Heightened Openness in Every Space

A generous 3.45-meter (11'-6") floor-to-floor height brings a spacious, airy feel to each apartment.



## Skyline Redefined

The tallest tower in Siddharth Vihar, reaching 38 storeys and 140 meters high, offers unmatched views and a new perspective on luxury.



## Grand Interiors with Double-Height Spaces

Experience a sense of grandeur in select duplex and simplex units with double-height drawing and dining rooms.





## **Sustainable Living with Eco-Friendly Construction**

Constructed with green building standards and advanced aluminium shuttering technology, ensuring sustainability and quality at every level.



## Lavish Outdoor Living

Enjoy expansive balconies with up to 9-foot projections, perfect for relaxing in the fresh air and soaking in breathtaking views.

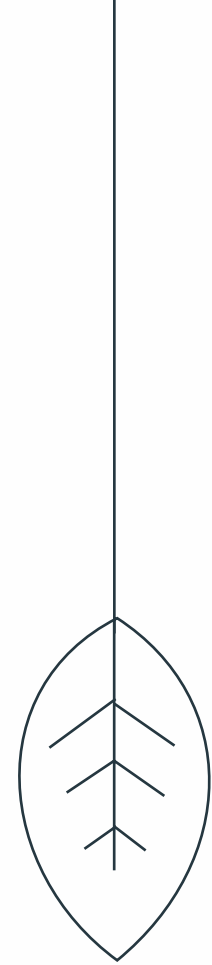


## A Regal Welcome Awaits

Step into elegance with a stunning 9-meter-high, triple-height entrance lobby that impresses from the moment you enter.



**Luxury Amenities**  
**Inspired by Resort Living**





## Sky-High Infinity Pool

Dive into luxury at a stunning infinity pool set 140 meters above, offering breathtaking views with every swim.



## Rooftop Gym with a View

Elevate your fitness journey in a rooftop gym where panoramic cityscapes inspire every workout.







## Relax and Recharge

Indulge in ultimate relaxation with steam and sauna facilities designed to melt away stress.

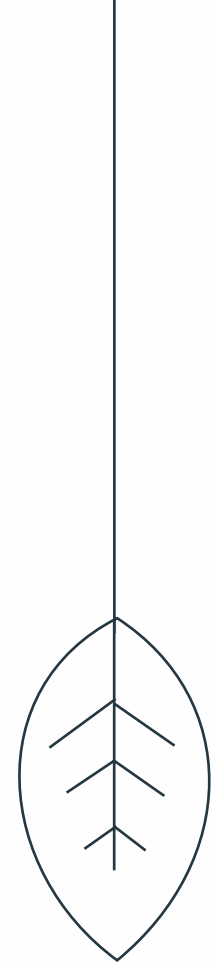


## Peaceful Yoga and Meditation Retreat

Find inner peace and rejuvenation in a serene hall dedicated to yoga and meditation.



**Thoughtfully Designed for  
Families of All Ages**





## Kids' Creche and Daycare

A safe and nurturing daycare center on the ground floor, tailored for families with young children.

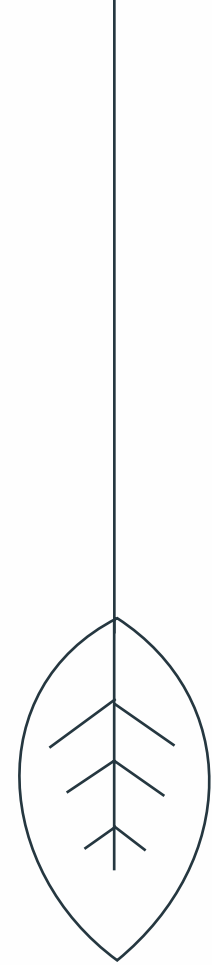


## Recreational Spaces for Seniors

Enjoy a fully equipped lifestyle with dedicated spaces, including a library, gym, and activity room for seniors to relax and connect.



**Privacy and Safety  
Prioritized for Peace of Mind**





## Exclusive Low-Density Living

Crafted for privacy and tranquility, with spacious layouts and open areas for a peaceful lifestyle.

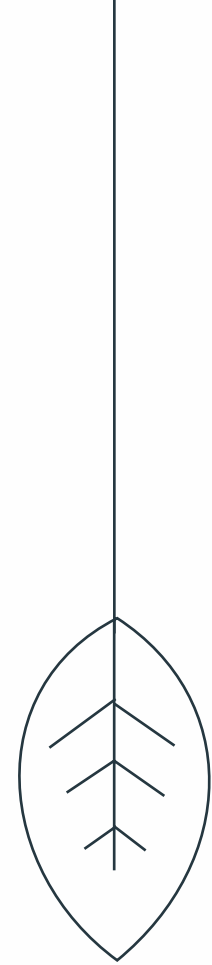


## Effortless Access with High-Speed Elevators

Eight high-speed elevators ensure swift, seamless movement, even during the busiest hours.



**MASTER LAYOUTS  
AND  
FLOOR PLANS**





# VAASTU HOMES

HEALTH • WEALTH • PROSPERITY



NEW DELHI RAILWAY STATION

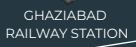


ANAND VIHAR



MAX HOSPITAL

INDIRAPURAM



GHAZIABAD RAILWAY STATION

MANIPAL HOSPITAL

GHAZIABAD

CONNAUGHT PLACE

PRAGATI MAIDAN



INDIA GATE

Khan Market

DELHI

MAYUR VIHAR-1

DELHI U.P. BORDER

NOIDA ELECTRONIC CITY

NOIDA SEC - 62

NOIDA SEC - 61

NOIDA SEC - 34

CROWNE PLAZA



SARVODYA HOSPITAL

GAURS INTERNATIONAL SCHOOL

GAUR CITY MALL

South Ex

Lajpat Nagar

GREATER KAILASH

New Friends Colony



Lotus Temple

Way To FARIDABAD

Okhla

AMITY UNIVERSITY

Wave City Center Noida

Botanical Garden Metro Station

Yatharth Super Speciality Hospital



Jaypee Hospital

Felix Hospital

SHARDA UNIVERSITY

NOIDA INTERNATIONAL AIRPORT

Pari Chowk

GREATER NOIDA

GREATER NOIDA



**LEGEND:  
LANDSCAPE ELEMENTS (RESIDENTIAL AREA)**

- 1 ENTRANCE/EXIT GATE COMPLEX
- 2 ARRIVAL COURT
- 3 GOLF CART PARKING
- 4 2.5M WIDE CURVILINEAR PATHWAY/ JOGGING TRACK
- 5 FRAGRANCE GARDEN WITH SPECIMEN TREE
- 6 CIRCULAR TOWER DROP-OFF WITH MAJESTIC CANOPY
- 7 FLOATING STEPPING STONES TO ENTRANCE LOBBY
- 8 GRAND CURVILINEAR WATER BODY WITH WATER FOUNTAIN JETS
- 9 DECORATIVE ELEMENTS
- 10 MOUND WITH DENSE PLANTATION
- 11 DOUBLE HEIGHT VERTICAL GARDENS
- 12 GRAND TRIPLE HEIGHT WATER WALL WITH BRANDING
- 13 DOUBLE HEIGHT WAITING AREA
- 14 DOUBLE HEIGHT INDOOR VERTICAL GARDEN WALLS
- 15 OUTDOOR COFFEE SHOP
- 16 SITTING PODS
- 17 MULTIPURPOSE LAWN
- 18 SITTING TIERS
- 19 FEATURE WALL
- 20 SCULPTURE GARDEN
- 21 YOGA/ MEDITATION LAWN
- 22 GARDEN PAVILION
- 23 PLUMBERIA GARDEN
- 24 BASEMENT CUT-OUT WITH PALM TREES
- 25 CHILDREN'S PLAY AREA
- 26 CURVILINEAR SITTING
- 27 OUTDOOR GYM
- 28 FLORAL GARDEN
- 29 PERIPHERAL PLANTATION

**LEGEND:  
LANDSCAPE ELEMENTS (COMMERCIAL AREA)**

- A FLOATING SIGNAGE
- B BOUNDARY WALL
- C GRAND COMMERCIAL PLAZA WITH BARCODE STYLE PAVING
- D MAJESTIC WATER CASCADE WITH SITTING

**LEGEND:  
HARD LANDSCAPE:**

- | LEGEND | DESCRIPTION  |
|--------|--|
|        | ARRIVAL COURT (MOUND & NATURAL STONES BY BRICK PAVING) |
|        | 2.5M WIDE PATHWAY (PAVED BY NATURAL STONES)            |
|        | WOODEN DECK (TERRAZZO STONE)                           |
|        | KIDS PLAY AREA (BLOCKS, SPRINKLER, LAWN)               |
|        | WATER BODY   |
|        | SITTING  |
|        | SCULPTURE  |
|        | ENTRY/EXIT POINTS                                      |

**LEGEND:  
SOFT LANDSCAPE:**

- | LEGEND | DESCRIPTION                |
|--------|----------------------------|
|        | PLANTING BEDS              |
|        | LAWN                       |
|        | ORNAMENTAL FIGUS TREES     |
|        | ORNAMENTAL SINGAPORE TREES |
|        | ORNAMENTAL PALM TREES      |



**TOWER-AR, LANDSCAPE MASTER PLAN**

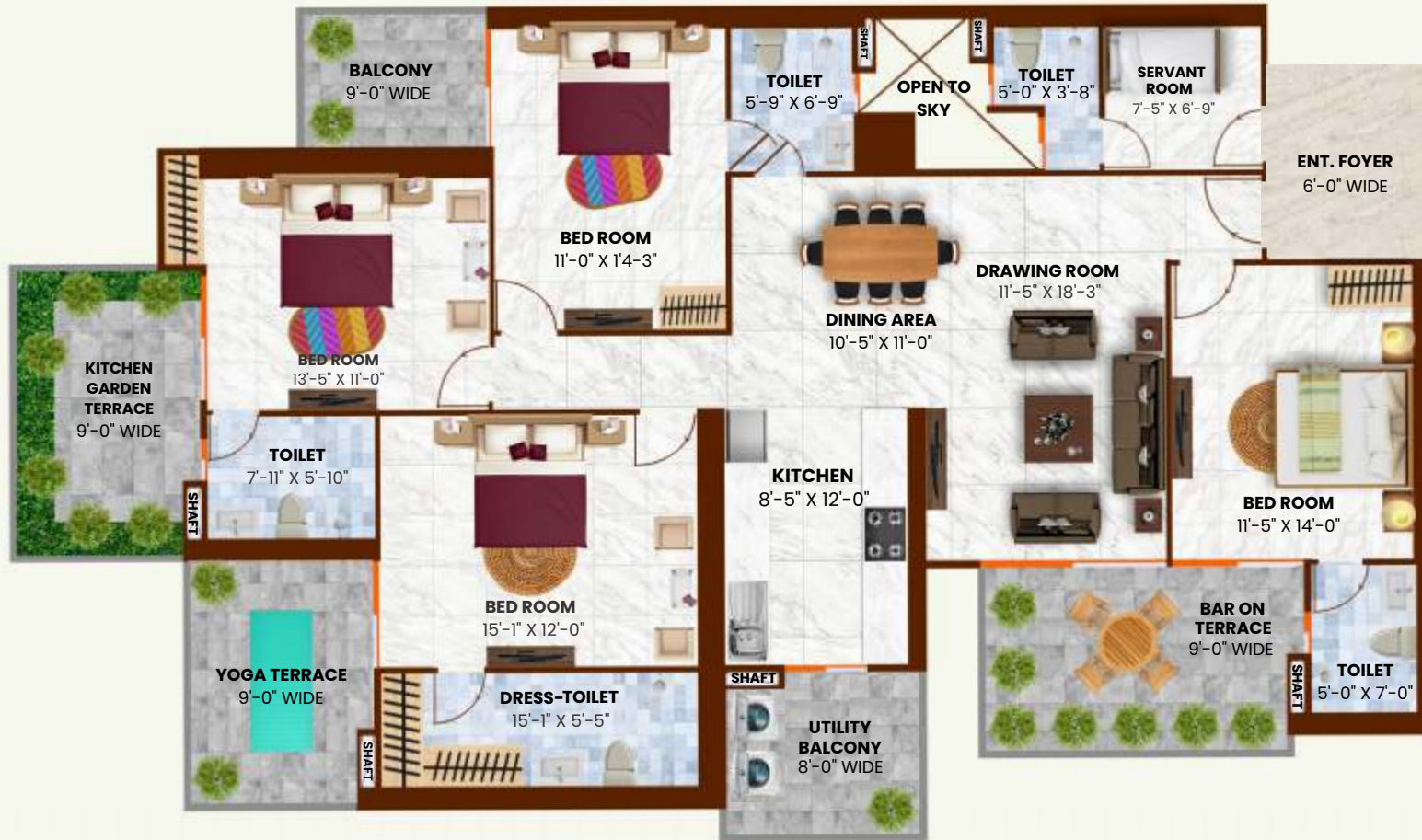
# UNIT - 01 (4 BHK)

TOTAL AREA = 3390 SQ FT.

## Floor Plan

BUILT UP AREA = 2110.82 SQ FT.

CARPET AREA = 134.97 SQM





# UNIT - 02 (6 BHK)

TOTAL AREA = 7990 SQ. FT.

## Floor Plan

BUILT UP AREA = 5201.81 SQ. FT.

CARPET AREA = 315.49 SQM.





# UNIT - 04 (3 BHK)

TOTAL AREA = 2690 SQ. FT.

## Floor Plan

BUILT UP AREA = 1693.50 SQ. FT.

CARPET AREA = 117.84 SQM.





# UNIT - 06 (3 BHK)

TOTAL AREA = 2590 SQ. FT.

## Floor Plan

BUILT UP AREA = 1620.74 SQ. FT.

CARPET AREA = 112.57 SQM.



# UNIT - 07(A) (3 BHK)

TOTAL AREA = 3490 SQ. FT.

## Floor Plan

BUILT UP AREA = 2161.95 SQ. FT.

CARPET AREA = 140.37 SQM.





# UNIT - 08 (6 BHK)

TOTAL AREA = 7990 SQ. FT.

## Floor Plan

BUILT UP AREA = 4912.58 SQ. FT.

CARPET AREA = 292.41 SQM.



**(UPPER DUPLEX)**



**(LOWER DUPLEX)**

# UNIT - 09 (4 BHK)

TOTAL AREA = 3390 SQ. FT.

## Floor Plan

BUILT UP AREA = 2105.98 SQ. FT.

CARPET AREA = 134.95 SQM.

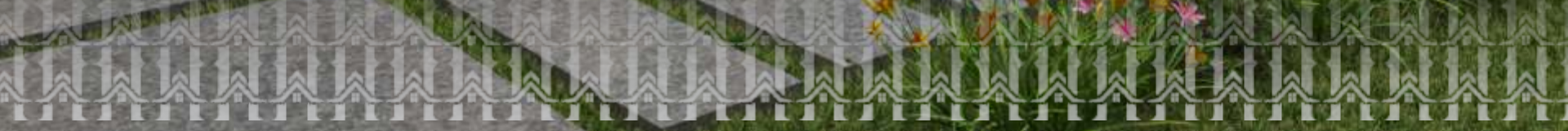


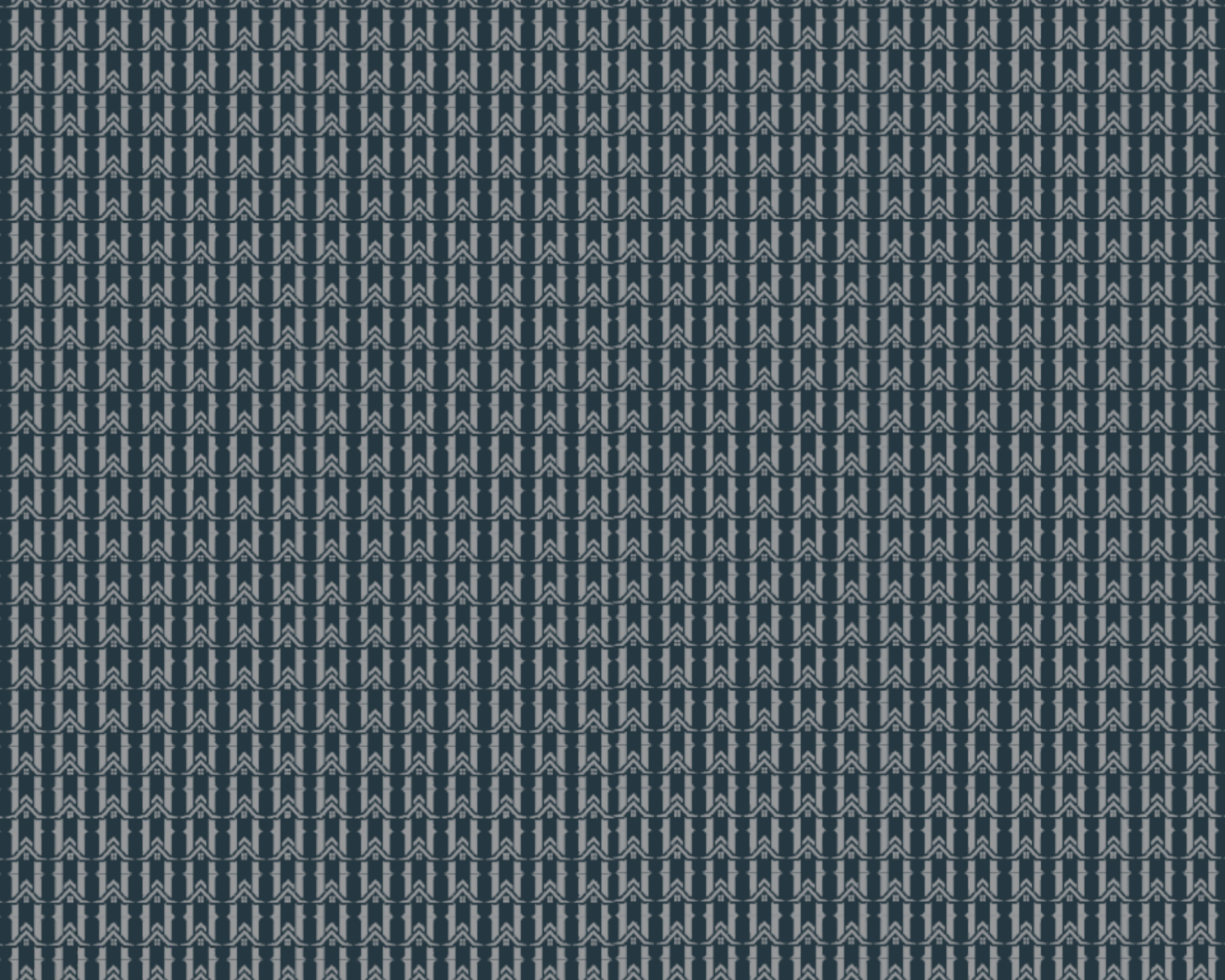


**VAASTU HOMES**

HEALTH • WEALTH • PROSPERITY

**Vaastu Homes - Where Elegance Meets  
Harmony and Every Space Feels Like Home**







**VAASTU HOMES**

HEALTH • WEALTH • PROSPERITY

**LIVE LIFE RESORT STYLE AT**  
VAASTU HOMES, SIDDHARTH VIHAR



[www.thevaastuhomes.com](http://www.thevaastuhomes.com)

